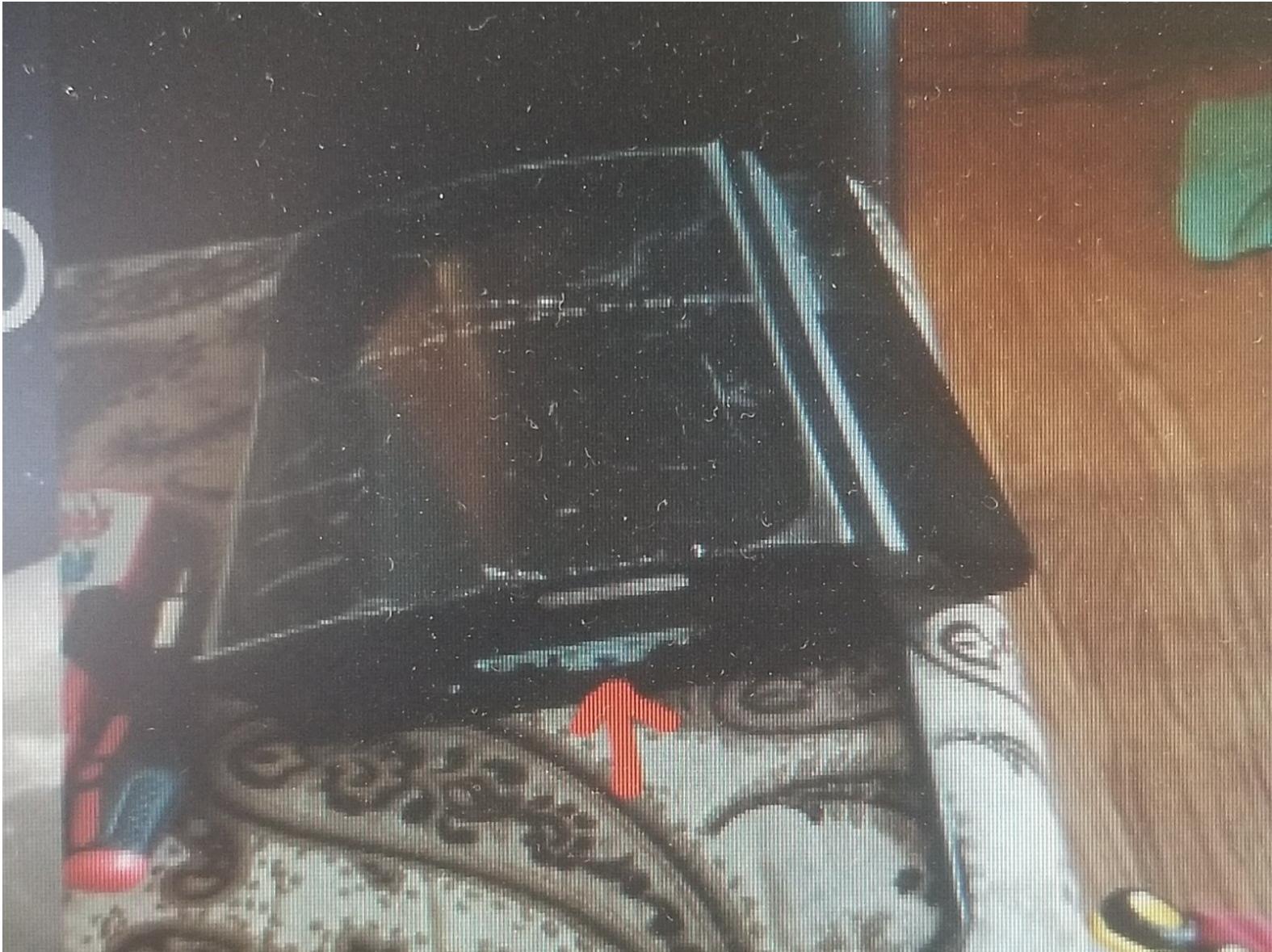


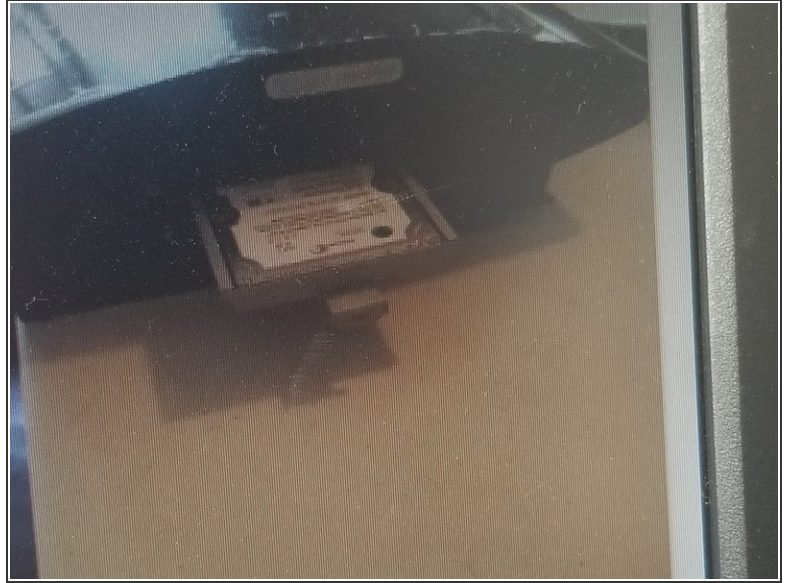
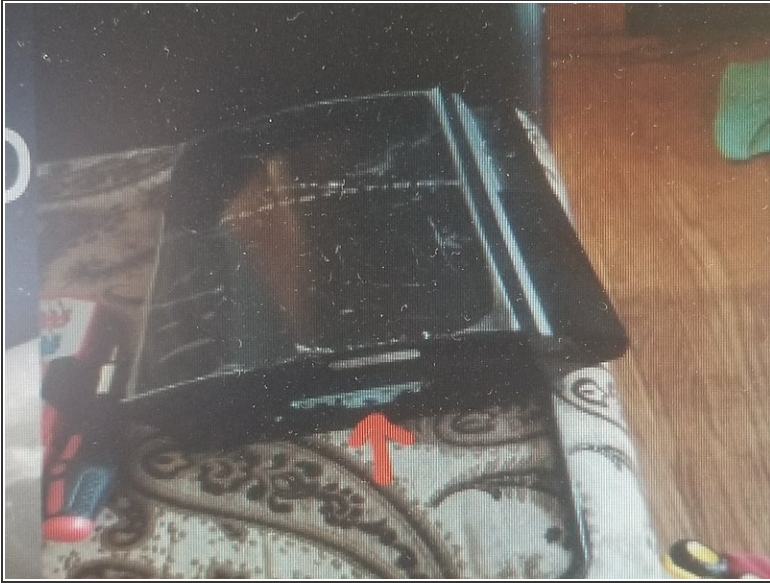


PlayStation 3 Teardown

Written By: carlos aldaba

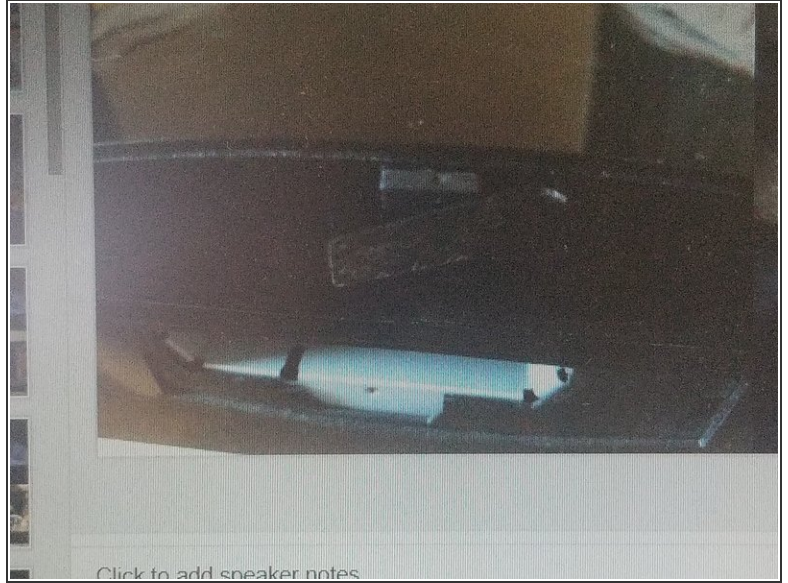


Step 1 — Remove HDD



- *remove black cover
- pull the HDD out

Step 2 — Remove security screw



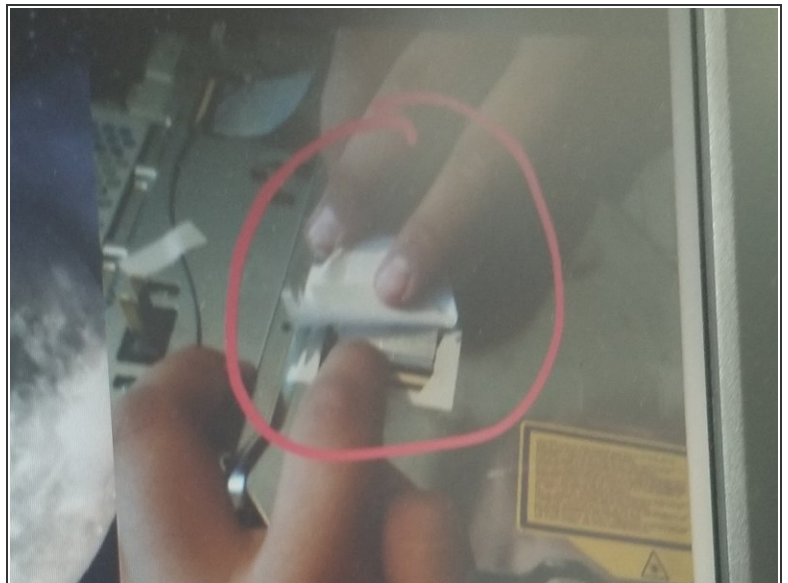
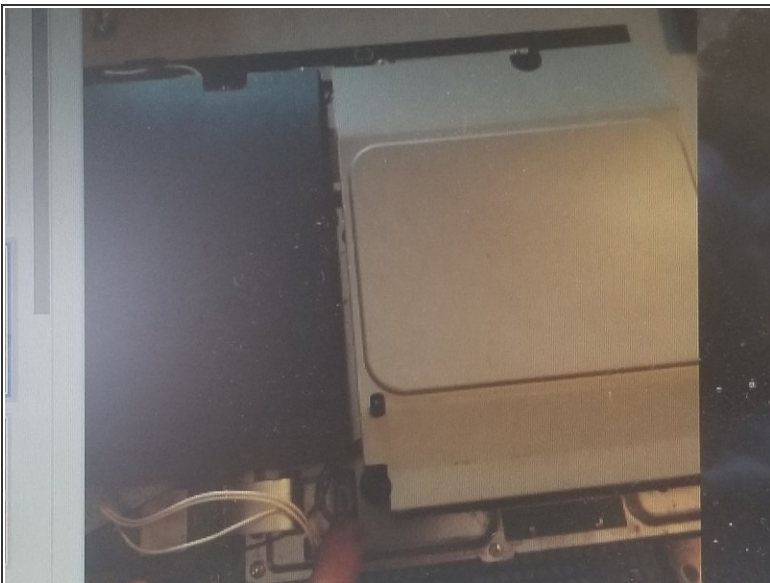
- Remove sticker and rubber piece
- remove screw
- pull cover towards you to remove

Step 3 — Remove cover



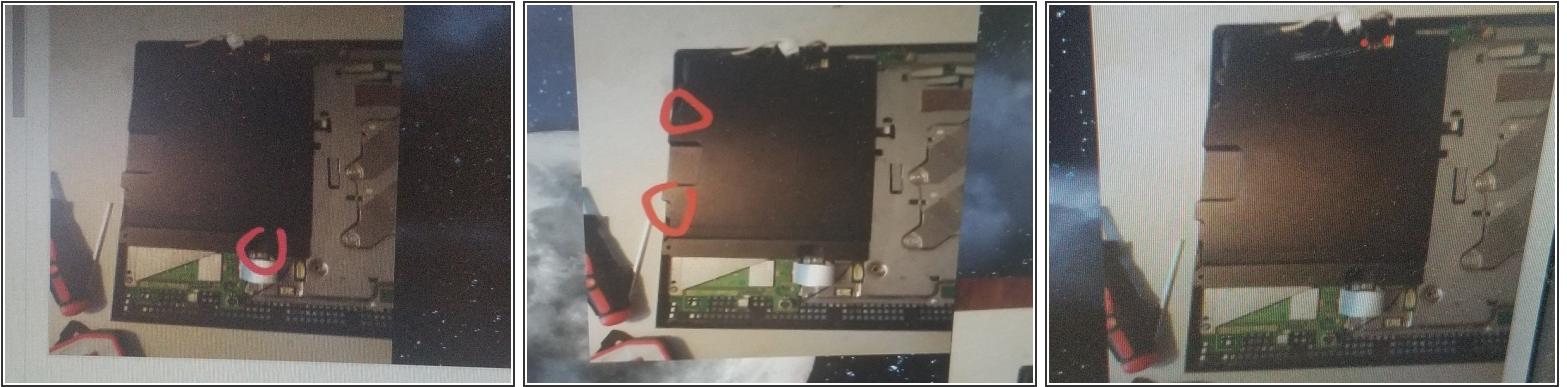
- remove screws
- BlueRay drive is not screwed down dont tip the console
- use finger to lift up

Step 4 — Remove blueray drive



- flip blueray drive over to remove the cable

Step 5 — remove power supply screw



- remove screws

Step 6 — Unhook power supply



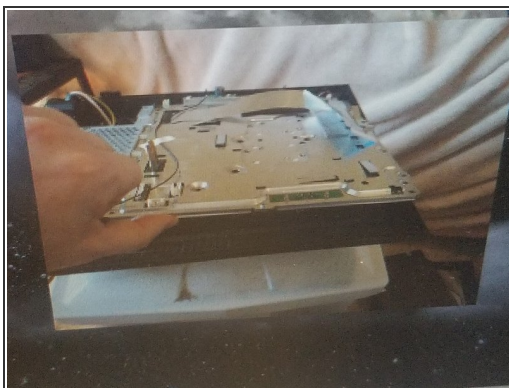
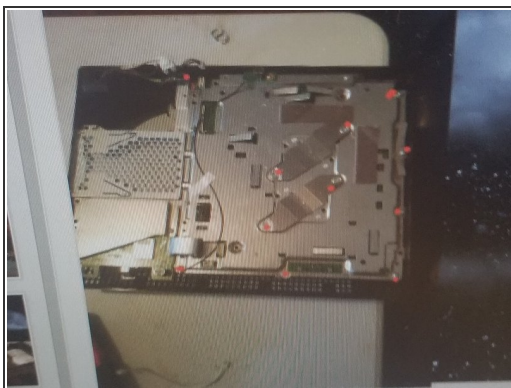
- Pull down on tab and pull out
- Pull straight up tab

Step 7 — Remove power supply



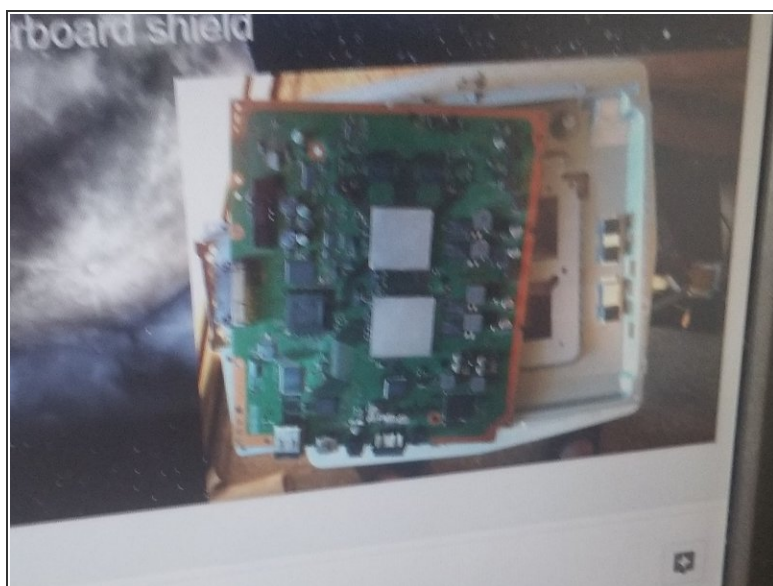
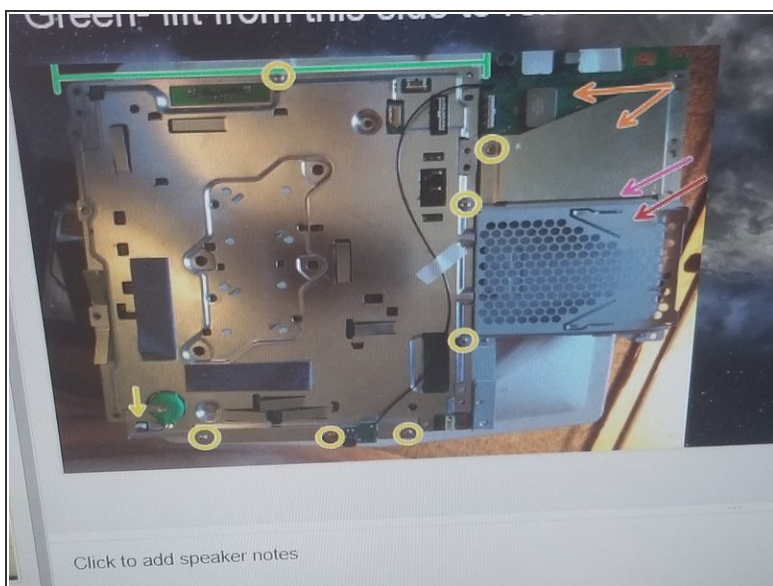
- something non metal lift this corner to make removal easier
- pull straight up to remove power supply

Step 8 — unscrew the board brace



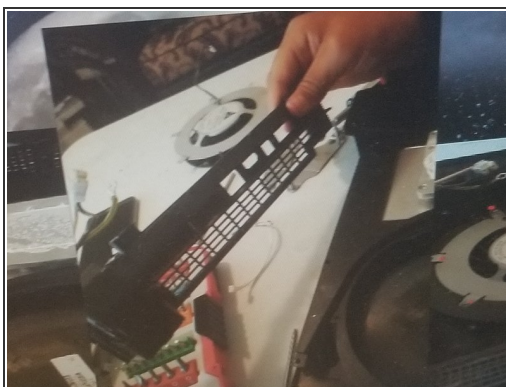
- remove all screws
- lift the front to remove

Step 9 — remove the shields



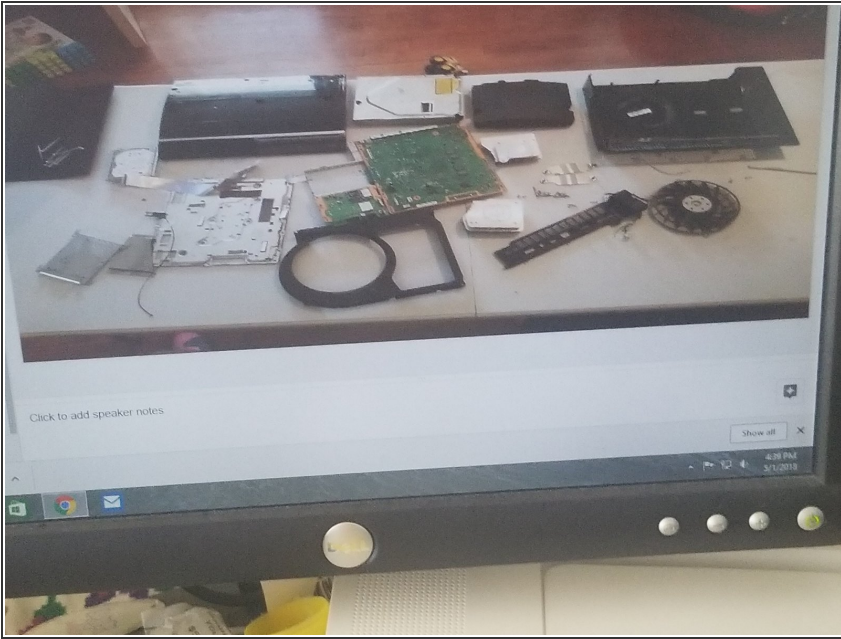
- unscrew and unplug the board battery to know what's this is its the color yellow
- red- lift this side and wiggle it
- orange- remove the shield over the USB and WiFi controller, it lifts straight up, remove white tape
- Green lift from this side to remove the motherboard shield

Step 10



- Unscrew the back plate and pull straight up the fan and cover lifts straight up

Step 11 — Done



- Insert wisdom here.

To reassemble your device, follow these instructions in reverse order.